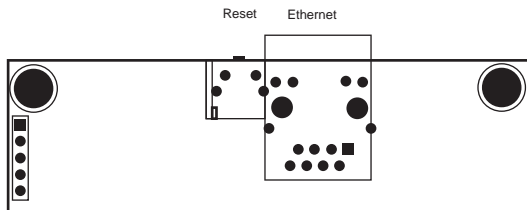




1



1. Connect uSwitch to a 12VDC power supply (the positive terminal is the terminal closest to the reset switch, the negative terminal is the terminal closest to the edge of the board on the same connector)

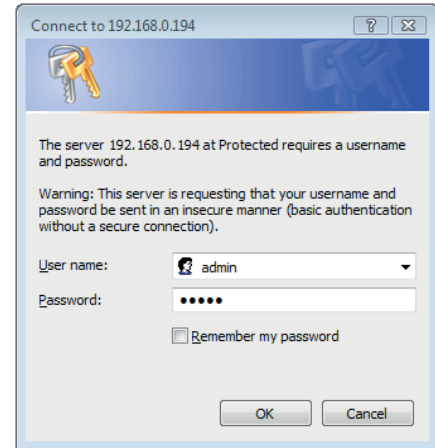
2. Connect a network cable to the uSwitch ethernet port and to an ethernet port on the network that will be used to connect first time to uSwitch.

3. Set up a computer to be on the same network/subnet as uSwitch. (To do this set the IP address of the computer to 192.168.1.X with subnet of 255.255.255.0). (X can be any number from 2-250)

2

4. Connect to the uSwitch by putting the following URL in the network browser address window:  
http://192.168.1.199

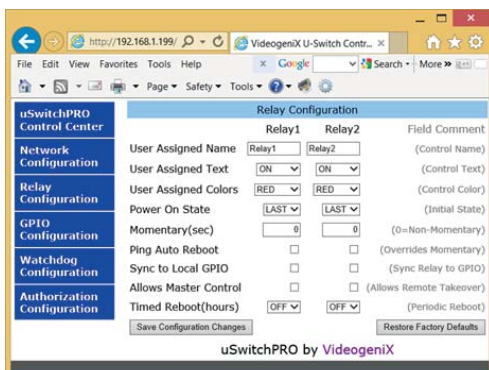
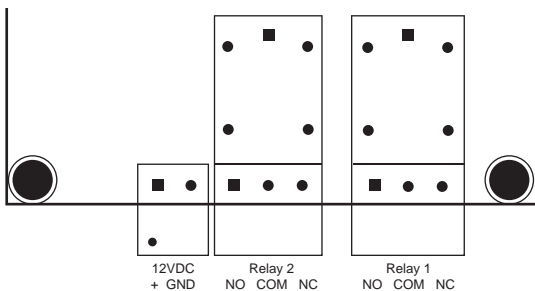
5. A security screen will pop up if this is the first time you are logging into the uSwitch at this address (see an example below). Enter "admin", for both the "User name:", and "Password" fields.



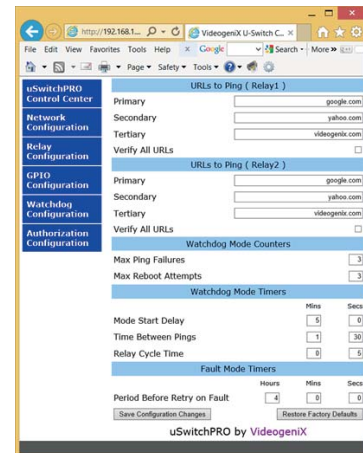
Videogenix

3

6. Connect the relay contacts as desired (see diagram below for relay connections). Normally closed are NC2 and NC1, C is common.



4



**URLs to Ping:** IP addresses uSwitch will ping.

**Max Ping Failures:** Failed ping response attempts before reboot occurs (cycled).

**Mode Start Delay:** Time before restarting ping tests.

**Time Between Pings:** Frequency between ping attempts.

**Relay Cycle Time:** Time uSwitch switches the relay off before switching it back on.

**Period before Retry on Fault:** Time before returning to "Auto Reboot Mode".