

Control. Detect. Reboot.

Modems, Routers, Cameras, Gates, Access Points and much more...



uSwitch

Control Anything Anywhere, Anytime Over the Web or Network

- Control anything from anywhere: Turn devices on and off, open/close doors and gates.
- Automatically or manually reboot network devices
- Log into uSwitch from any web enabled device including iPhone, Android, PC and Mac
- Secure and password protected
- Up to 110/220V 5 Amp relay contacts
- No programming required
- Small, compact and easy to install

What Will “U” Do with uSwitch?

The Powerful Watchdog Relay that Reboots



uSwitchPro

All that uSwitch Does and More! User Customizable GPIO Inputs Control at the Push of Any Button

uSwitchPro offers the same functions as uSwitch but also includes GPIO inputs that can be used to trigger up to 16 other uSwitch relays locally or remotely across any network. uSwitch is a perfect solution to instantaneously trigger multiple relays in multiple locations remotely over a network from a contact. Application possibilities are endless!

What Will “U” Do with uSwitchPro?

Converts Relays to AC Power Outlets

The perfect accessory for uSwitch and uSwitchPro

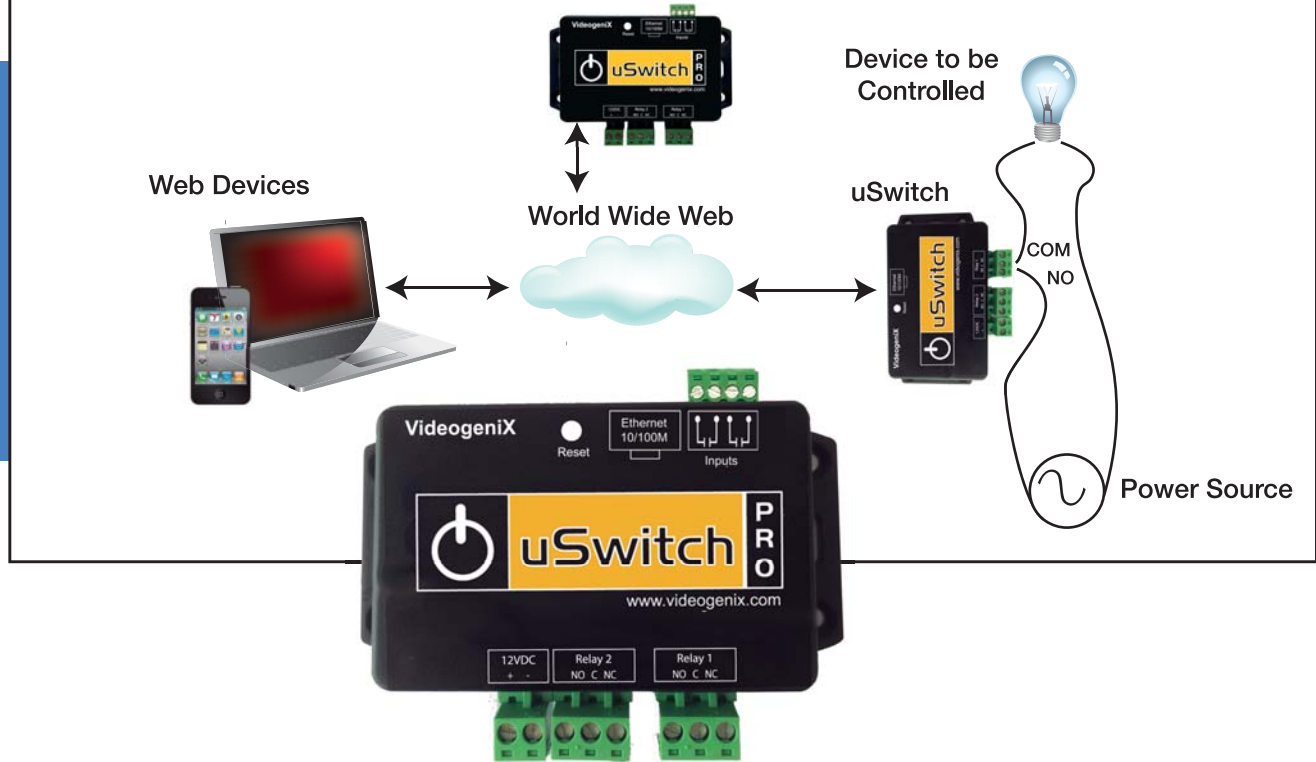
- Supplies input power
- No need for wiring
- Snaps right on
- No need for splicing



A-Plug



How uSwitch and uSwitchPro Work



uSwitch & uSwitchPro Product Specifications

Features

uSwitch family of products is controlled via any Web Browser and can also be controlled via CGI Commands

Specifications

Relays have Normally Open (NO) and Normally Closed (NC) Contacts each capable of switching max:

- 12VDC/10A
- 24VDC/10A
- 125VAC/5A
- 250VAC/3A

Auto Ping – Watch Dog

Unit can Ping 3 different IP Address/URL to confirm connectivity
Selectable auto reboot based on Ping Response

Supply

Requires external 12 volt DC / 500mA power supply

24v DC 500 MA version also available

Operation Range

Industrial (-20°C to +80°C)

Standby current

(Relays OFF) - 58mA

One Relay on - 92mA

Both Relays on - 126mA

Dimensions

105 mm / 51 mm / 20 mm

Default

IP address: 192.168.1.199

Subnet Mask: 255.255.255.0



Keeping Networks Alive